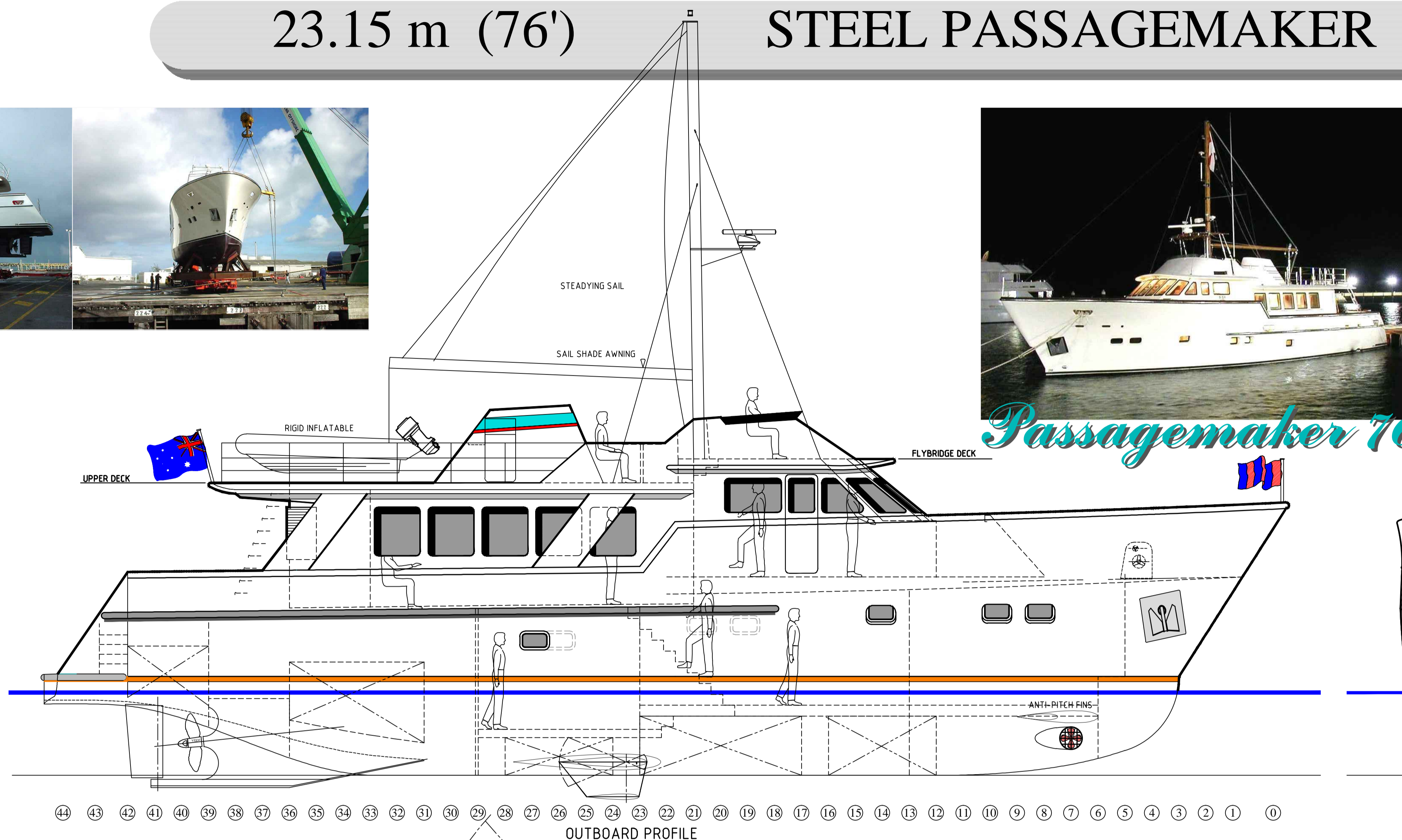
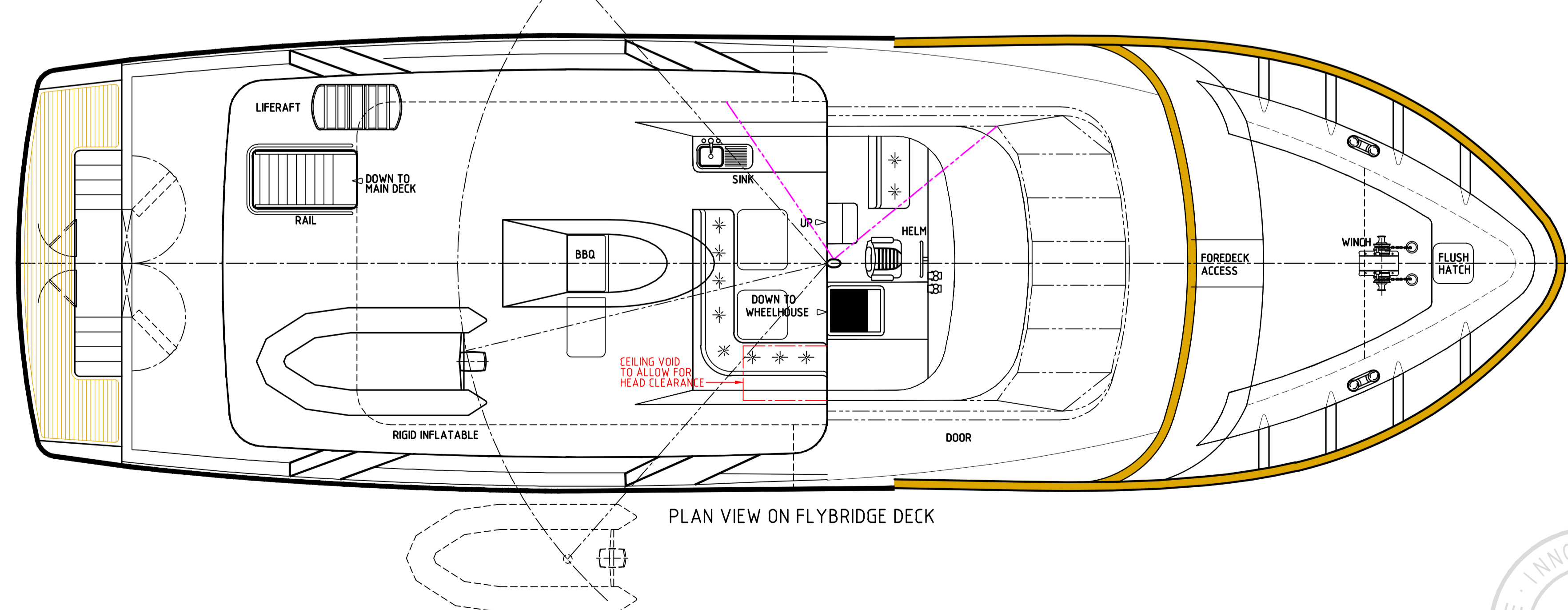
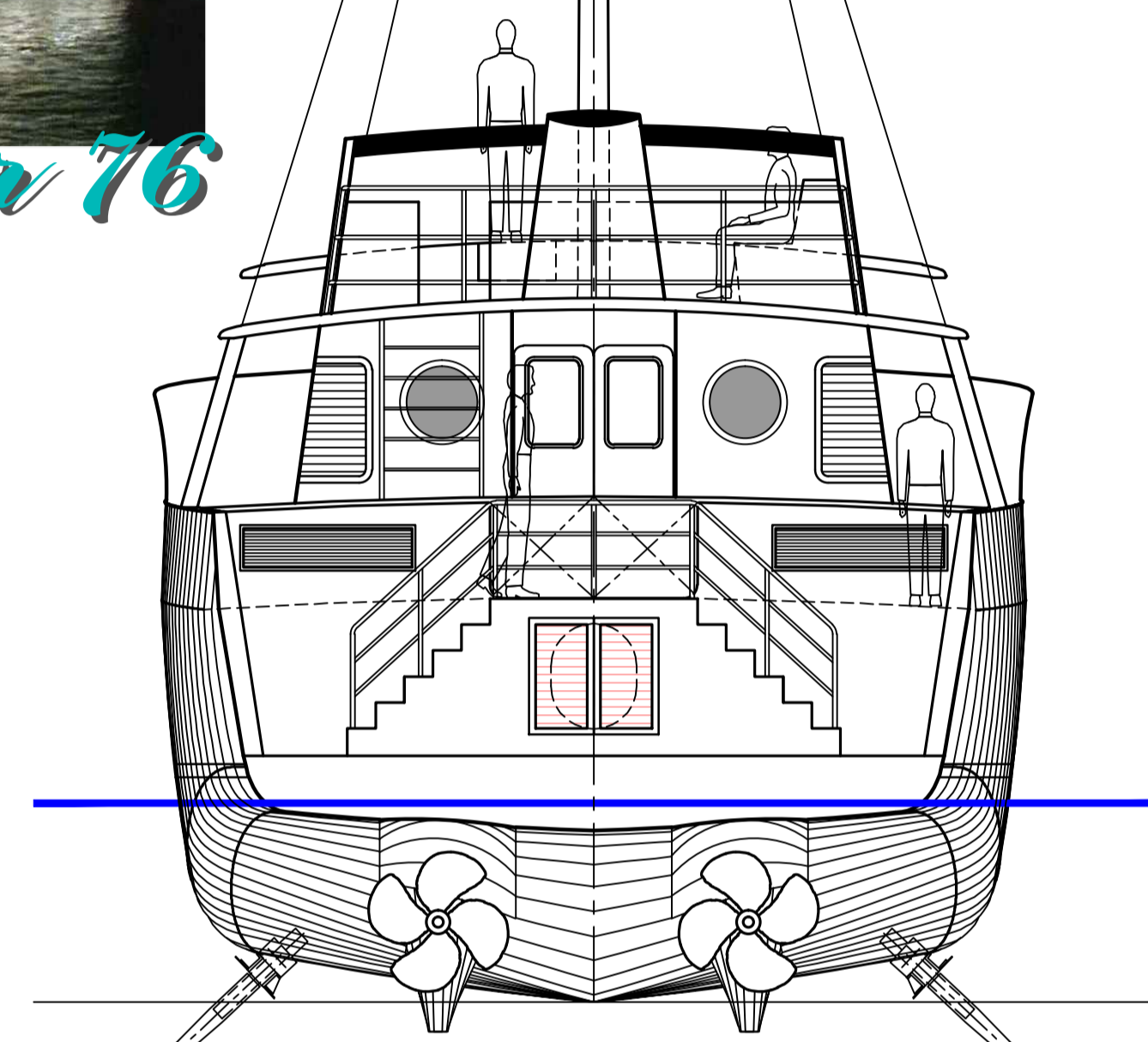
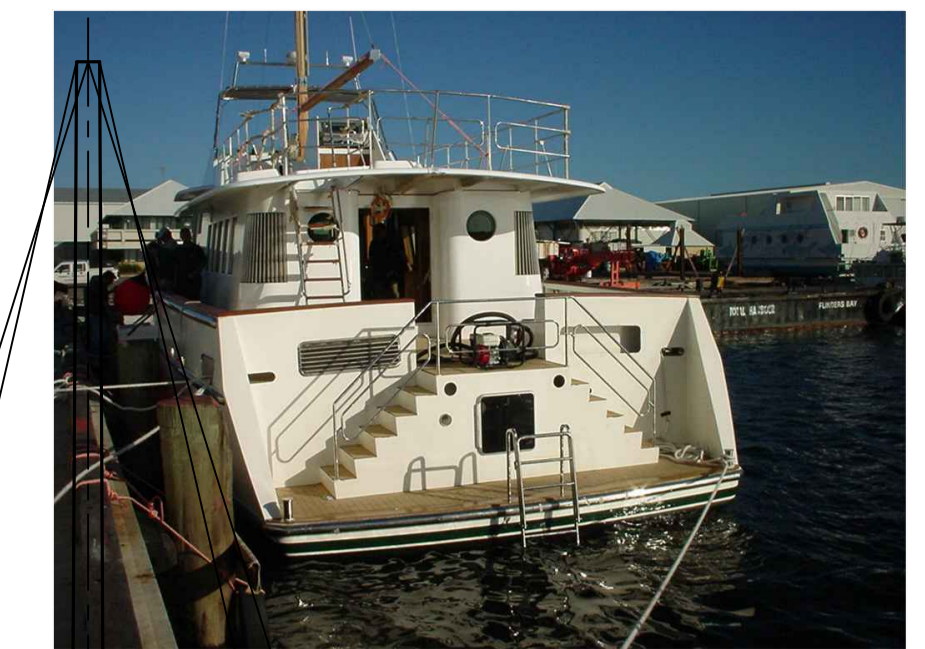


23.15 m (76')

STEEL PASSAGEMAKER



Passagemaker 76



PARTICULARS	
EXTREME LENGTH OVERALL	23.150 m (76')
WATERLINE LENGTH	21.025 m (69')
WATERLINE BEAM	6.350 m
MOULDED BEAM	6.650 m
HULL DRAUGHT (BARE)	1.600 m
HULL DRAUGHT (WITH FINS)	2.000 m APPROX.
AIR DRAUGHT (WITH MAST)	12.450 m
(WITHOUT MAST)	5.350 m
HULL SPEED	10.8 knots
ENGINES	CUMMINS NT 855
GEARBOXES	275 BHP @ 1800 RPM
DIESEL FUEL CAPACITY	TWIN DISC 500L 3.38:1
FRESH WATER CAPACITY	20,200 Litres Minimum
MAXIMUM DISC HEIGHT (GM)	5,900 Litres Plus De-salinator
PRISMATIC CO-EFFICIENT (Cp)	2.000 m
BLOCK CO-EFFICIENT	0.560
LENGTH / BEAM RATIO	0.430
STABILIZERS	0.300
BOW THRUSTER	WESMAR 12 SQ. FT.
STEEL HULL	WESMAR
	GRADE GR 250
	8mm BOTTOM, 6mm SIDES, 5mm DECK
COMPOSITE SUPERSTRUCTURE	
	INCORPORATING KEVLAR AND UNI-DIRECTIONALS
	ABS DESIGN APPROVED AND CERTIFIED
	ABS CONSTRUCTION APPROVED AND CERTIFIED



Global Marine Design Pty Ltd
5 / 43 Burlington Street
Naval Base, Western Australia 6165
T: +61 (0)8 9437 1319 F: +61 (0)8 9437 2030
globalmarinedesign.com
ABN: 11 101 353 851

DRN GMD	CLIENT	TITLE	REV
APPD	VESSEL PASSAGEMAKER 76	PASSAGEMAKER ARRANGEMENT	
DATE 12.05.99	DESIGNER		
UNLESS OTHERWISE STATED ALL DIMENSIONS ARE IN MILLIMETRES	DESIGN No. 97091	A1 DRG No. 971091\1\010101	SCALE 1:25 SHEET 1 OF 2